

# Bear Creek Watershed Association Education Policy



Russell Clayshulte  
BCWA Manager

Kim Reaves  
Outreach and Education Coordinator

# About BCWA

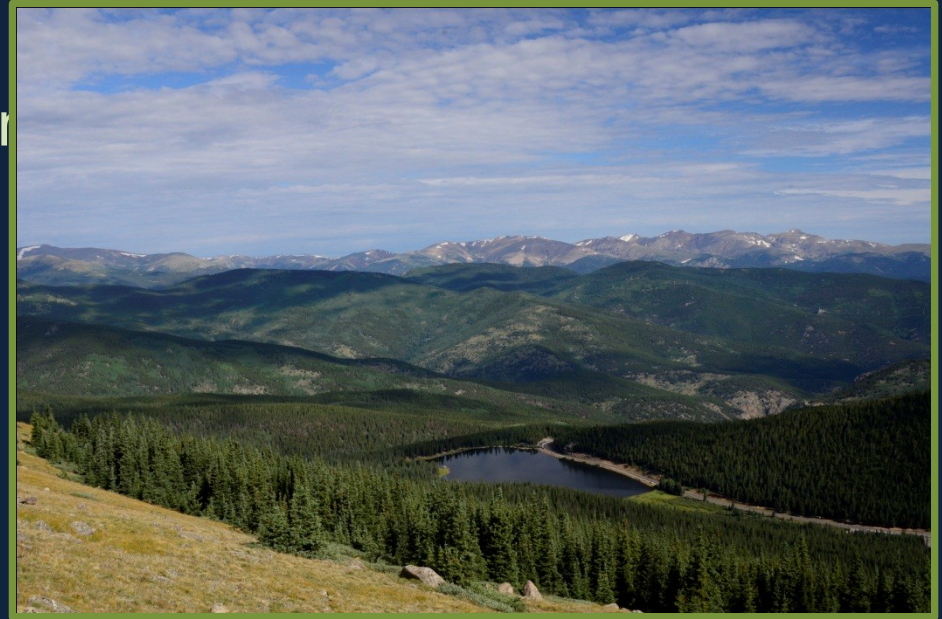
- Location and Regulation

## Policy

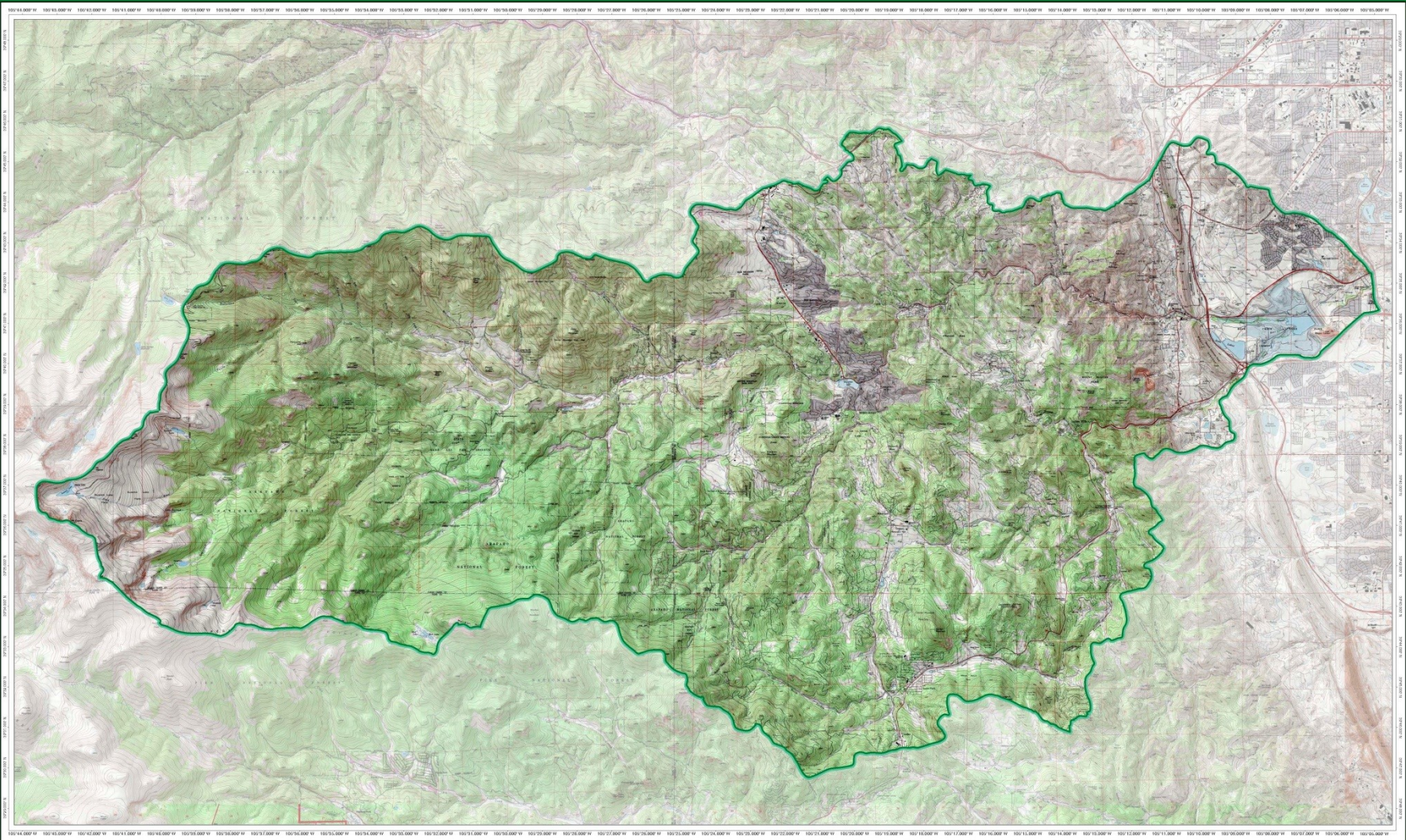
- Master Plan
- Philosophy
- Programs

## Education

- Junior Watershed Managers
- Vision
- Background
- Watershed 101
- Pilot – Evergreen High School



# Watershed Defined



# Policy - Education and Outreach

## MANAGEMENT PLAN:

Can be implemented at the regional, state and federal levels, consistent with state and federal regulations.

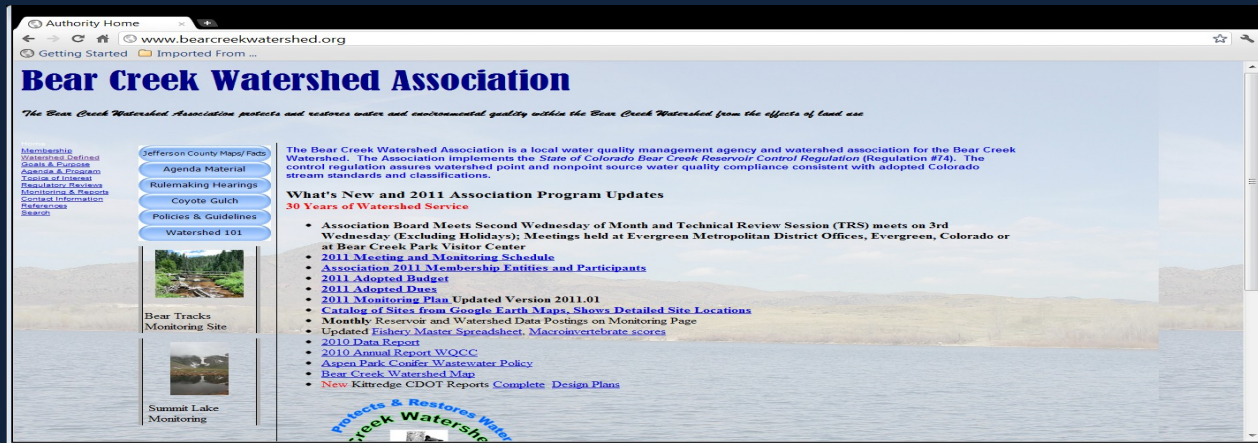
## PHILOSOPHY:

Find ways to increase public awareness of nonpoint source pollution, prevention and restoration.

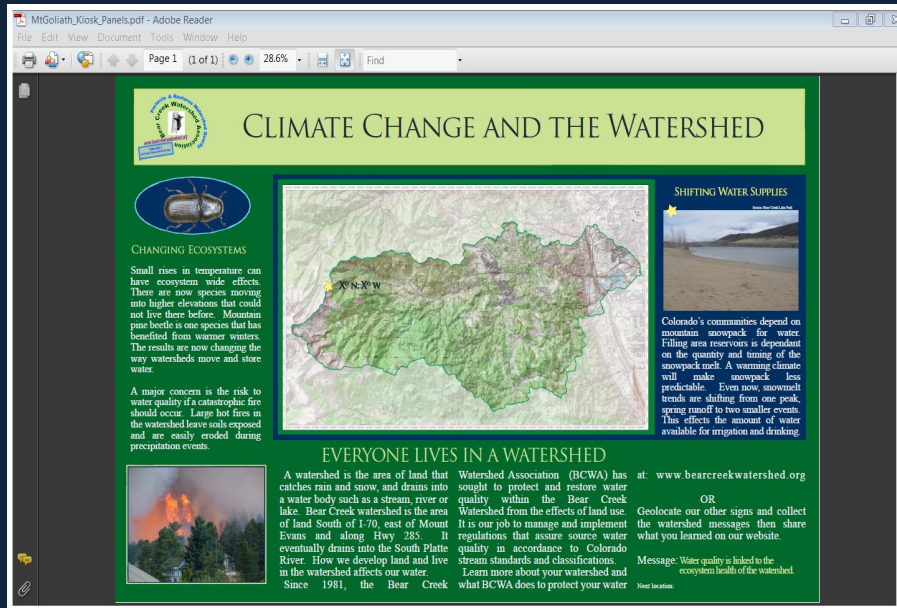


# Policy – Education and Outreach

Web



Signage



Russell Clayshulte

BCWA

Kim Reaves

# Policy – Education and Outreach

Outreach  
Technical Assistance

Coyote Gulf Restoration



Evergreen Earth Day



# Policy – Education and Outreach

## Junior Watershed Managers Watershed 101

The screenshot shows a Microsoft PowerPoint window with the title bar 'Presentation1 - Microsoft PowerPoint'. The ribbon includes File, Home, Insert, Design, Transitions, Animations, Slide Show, Review, and View. The left sidebar shows the 'Print' task pane with options for saving, opening, and printing. The main slide content is as follows:

**Bear Creek Watershed Association**

# Junior Watershed Managers Watershed 101

Summit Lake  
Mt. Evans Wilderness

Evergreen Lake  
Evergreen, CO

Bear Creek Reservoir  
Lakewood, CO

**Presenters:**  
Russell Clayshulte – Association Manager  
Chris – Evergreen Metro  
Tony – Evergreen Metro  
Kim Reaves – Association Outreach

**Bear Creek Watershed Association**  
Protects & Restores Watershed Quality  
www.bearcreekwatershed.org  
1983-2011  
50 Year Anniversary Series

1 of 25 | 70%

Russell Clayshulte

BCWA

Kim Reaves

# Education – Junior Watershed

## Managers

### VISION:

Offer a unique experiential education model for engaging high school students with jurisdictional and regulatory agencies in collaborative natural resource management and conservation activities at a watershed level.

### HOW IT WORKS:

BCWA assists in the education of students on watershed issues then supports the development of real-world projects related to research, maintenance, regulatory compliance and care of the Bear Creek Watershed.



# Junior Watershed Managers

Background



Russell Clayshulte

BCWA

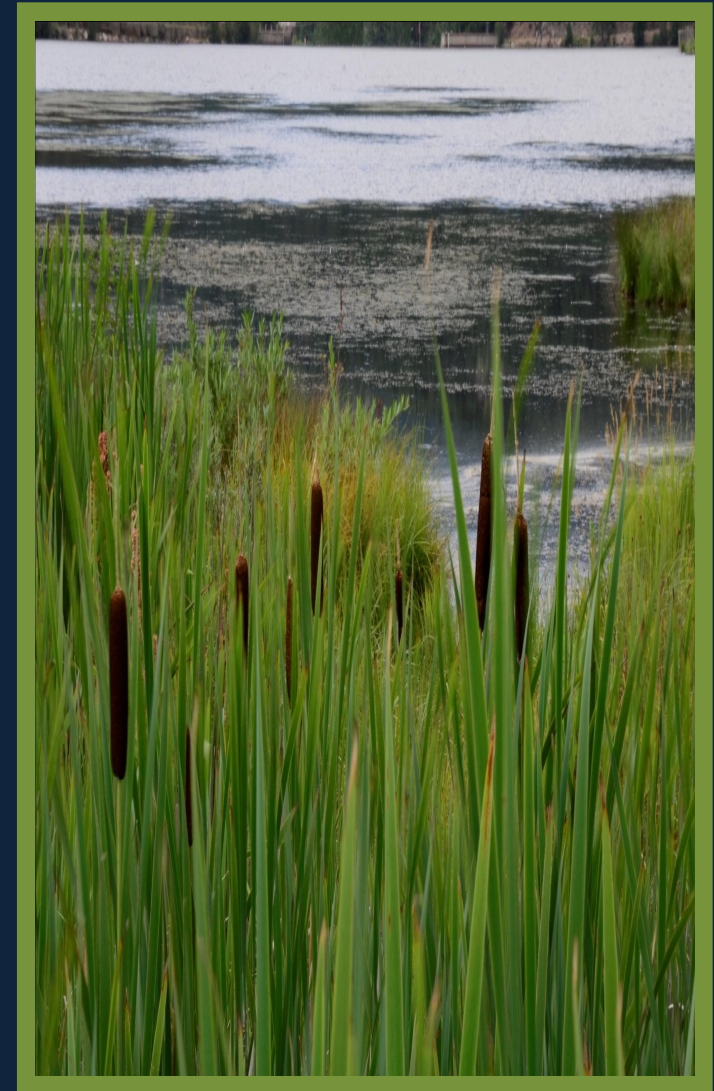
Kim Reaves

# Junior Watershed Managers

## Watershed 101

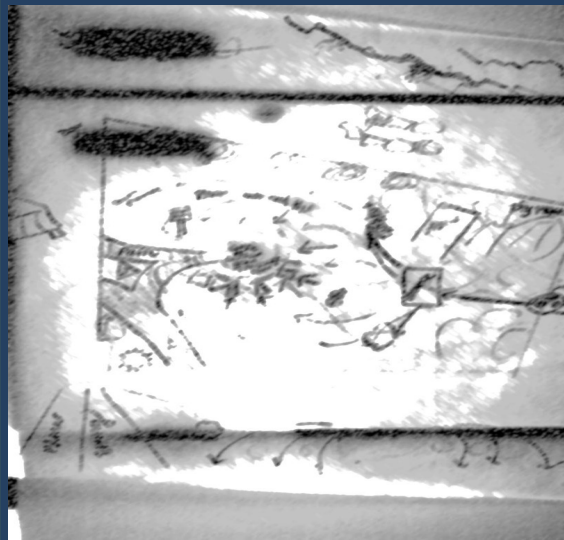
### Project List

- Monitoring
  - = Weather Station
- Research
  - = Wilmont Creek
  - Nutrients and Temps
  - Storm Water
  - Elk Study
- Care
  - = Low Impact Development
  - Legacy Storm Water
  - Rain Garden



# Junior Watershed Managers

## Rain Garden Project



Russell Clayshulte

BCWA

Kim Reaves

# Junior Watershed Managers

## Rain Garden Project



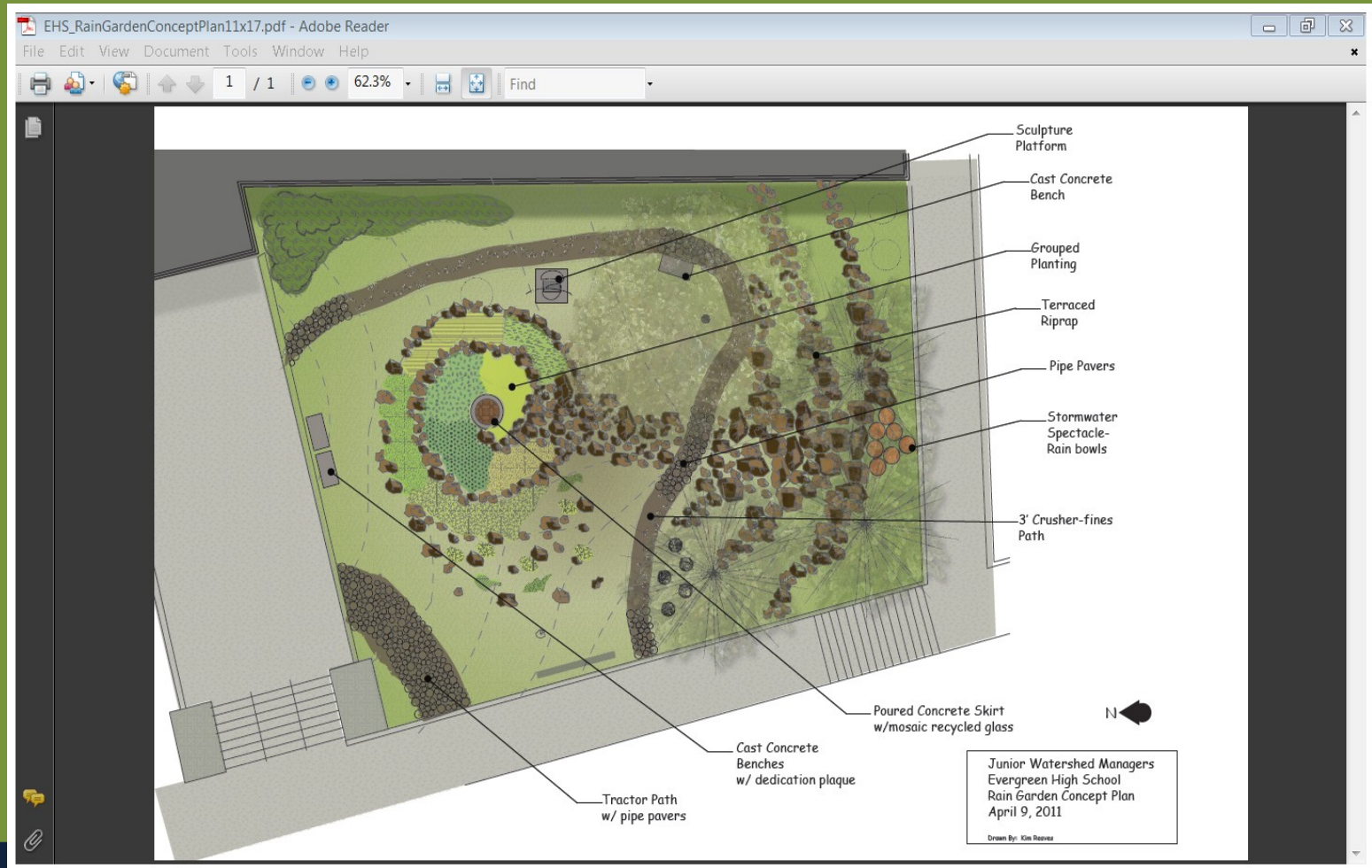
Russell Clayshulte

BCWA

Kim Reaves

# Junior Watershed Managers

## Rain Garden Project



# Junior Watershed Managers

Rain Garden Project:  
Budget

